

# *Valensole*

## LAVENDER FIELD LOCATIONS





# 1. LAVANDES ANGELVIN

<https://goo.gl/maps/pSexVtVC6pk2jzFv9>

This field is very close to the town of Valensole, which is just a five-minute drive away. This is probably the most well-known lavender field in the area and a favourite for those looking to shoot at sunset. This is also a family-owned lavender farm! You can purchase lavender products such as essential oils, soaps, perfumes and other lavender-based products at the shop before or after our photo session if you're looking for souvenirs.

**Pros:** It's an iconic field with the two trees on the horizon.

**Cons:** Because of how beautiful and iconic it is, this is one of the busiest fields in the region. It's especially crowded during the sunset over the first two weeks of July.













## 2. FIELD ON ROUTE DE MANOSQUE "SUNSET FIELD"

This field is also just a few minutes away from Valensole, making it easy to get to even if you don't have a vehicle for your trip. We call this field the "sunset field" since it's one of our favourites to shoot in at sunset!

**Pros:** The sun sets almost directly behind the field, giving way to a beautiful golden glow over the lavender during sunset. It's also usually the field with the least imperfections.

**Cons:** Other than Lavandes Angelvin, this will be one of the busiest fields for sunset. They have also been closing the field to visitors until later in the season, so we may not be able to shoot here until July.

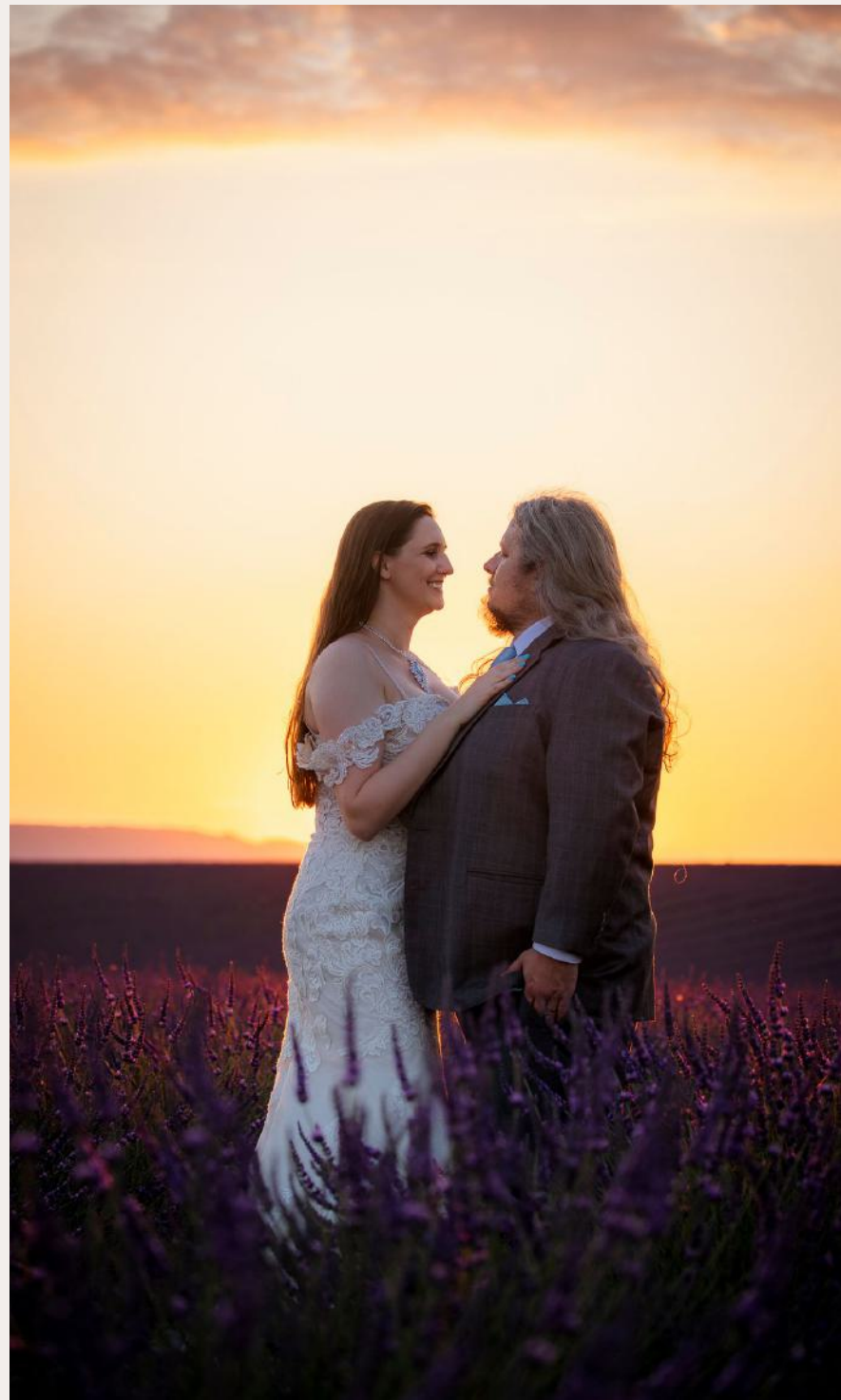








PUIMOISSON









### 3. FIELD ON ROUTE DE MANOSQUE "CURLY FIELD"

This field is right across the street from the "sunset field". It has a beautiful unique curl and very cute ruins of a little abandoned shed near the back. If you are planning a sunset shoot, we normally recommend starting at this field first as the "sunset field" across the street has much better sunset lighting.

**Pros:** We love shooting here because once you walk further into the field, it's incredibly quiet! It also has some stunning olive trees near the back. Abandoned ruins + olive trees are pictured below.

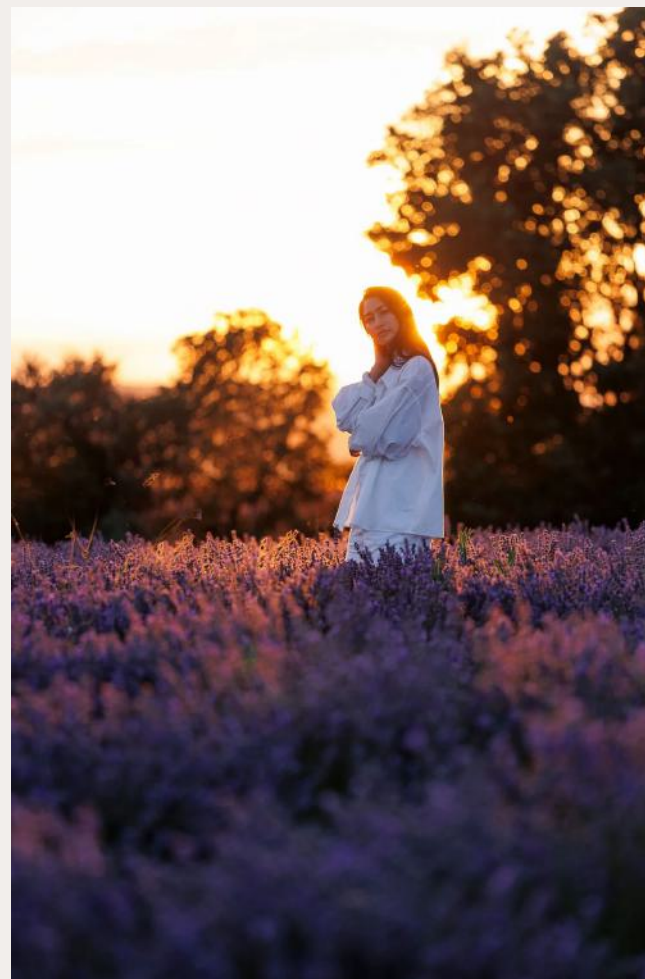
**Cons:** This field is huge, so we'll be walking for about 5 minutes to get to the area in the back with the ruins. There also won't be direct sunset lighting.

















#### 4. FIELD ON ROUTE DE PUIMOISSON "DIP FIELD" OWNED BY LAVANDES ANGELVIN

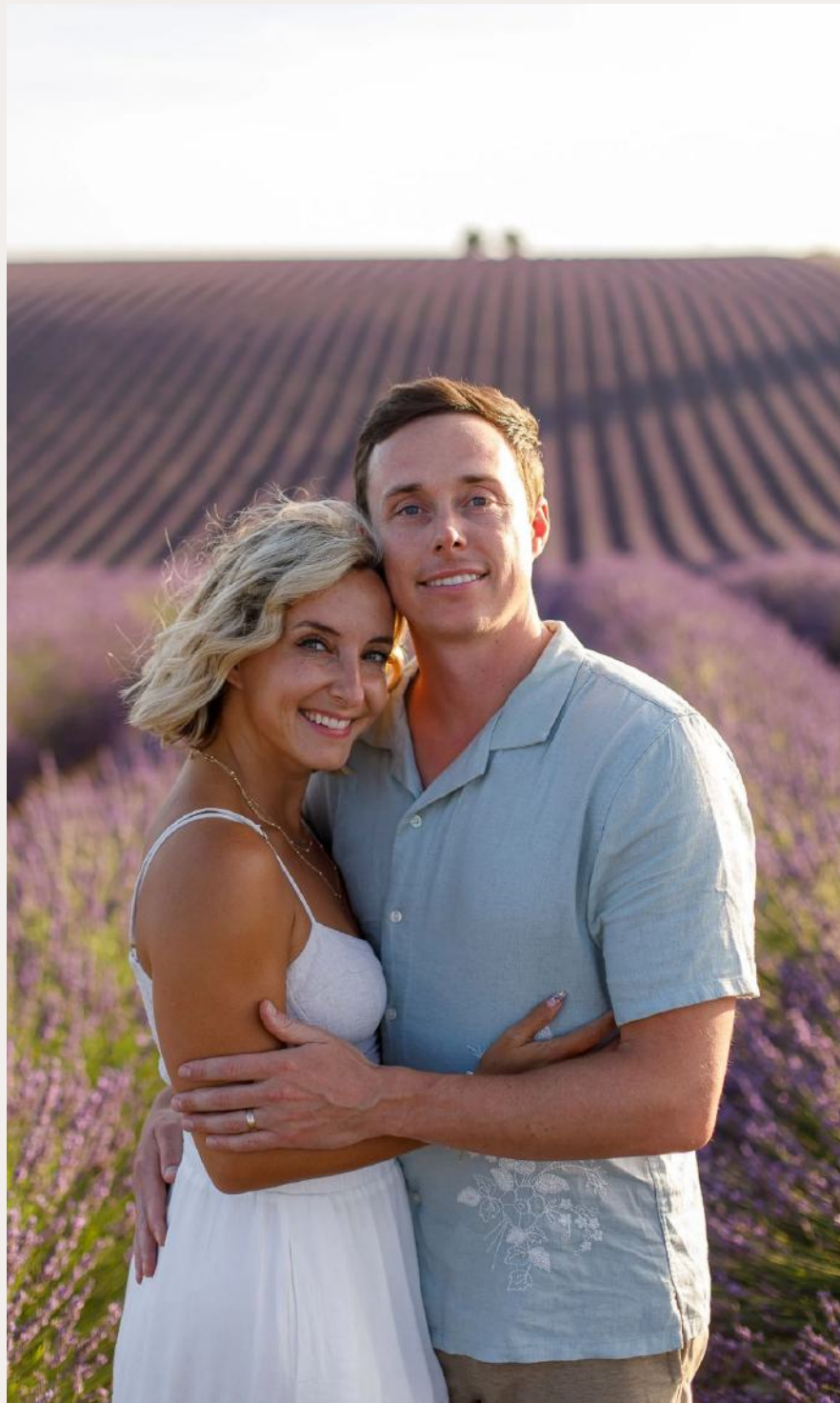
This field is east of Valensole, about a 10-minute drive. We call it the "dip field" because of the incredibly dramatic drop/dip of the small hill that the lavender is planted on. It's our personal favourite for proposals at sunset since it'll be quieter than the others that are closer to Valensole.

**Pros:** It has the most dramatic "drop" of any of the fields in the area, so it gives the illusion that the lavender goes on forever. It's also gorgeous at all times of the day, and usually quieter for sunset compared to the fields closer to Valensole.

**Cons:** If you are planning a sunset shoot, the lighting will be coming from the side only (but it's still our personal favourite field for sunset!).

















## 5. FIELD ON ROUTE DÉPARTEMENTALE 8 "SUNRISE FIELD"

This is one of our favourite lesser-known fields, as there are not that many people here when we're shooting, especially if it's at sunrise! It's about 10 minutes away from Valensole. Photos taken here during the sunrise are stunning because of the direct sunrise lighting that rises from the gorgeous mountains and valley that line the horizon. That's why we've nicknamed it our "sunrise field".

**Pros:** It's one of the quietest fields in the area and also huge, so it'll feel like we have the field all to ourselves at sunrise.

**Cons:** Not recommended for shoots during the day and definitely not at sunset as there is no direct sunset lighting.













## 6. FIELD ON ROUTE DÉPARTEMENTALE 8 "SUNRISE FIELD 2"

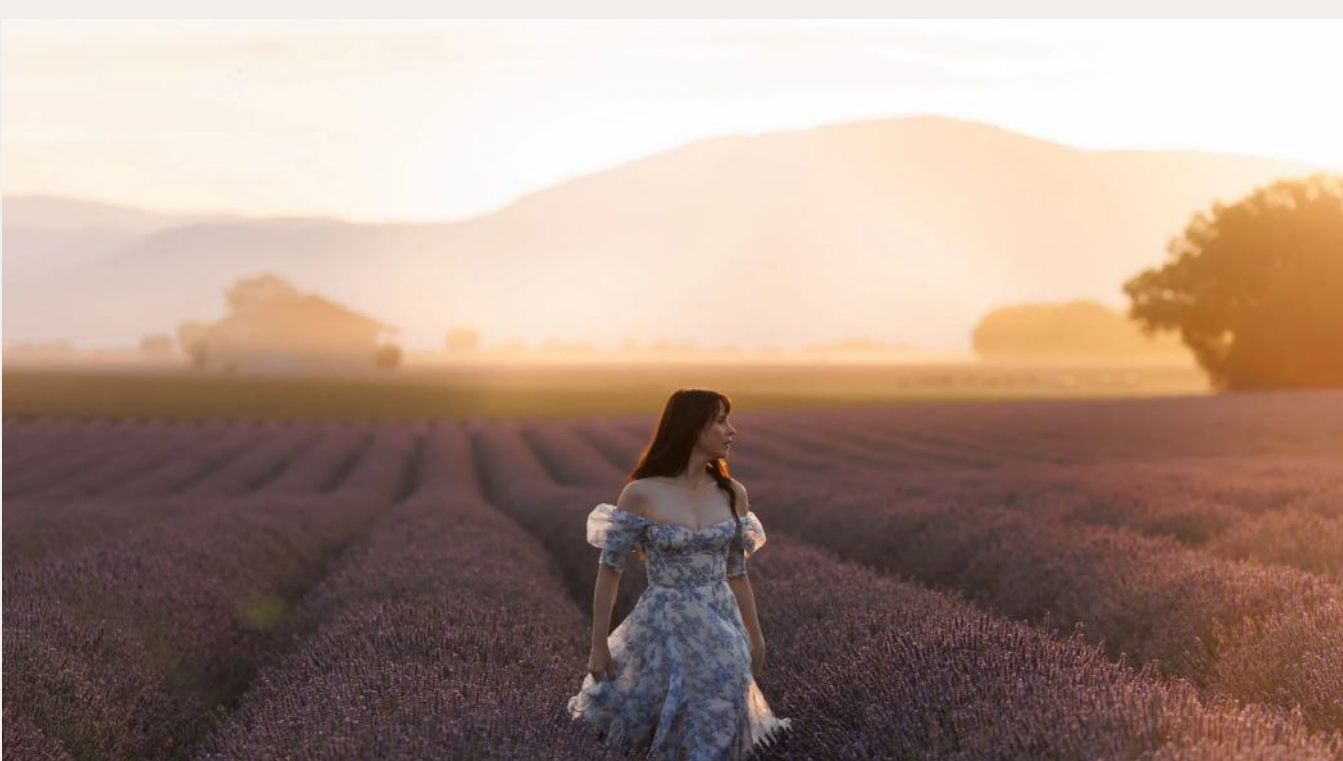
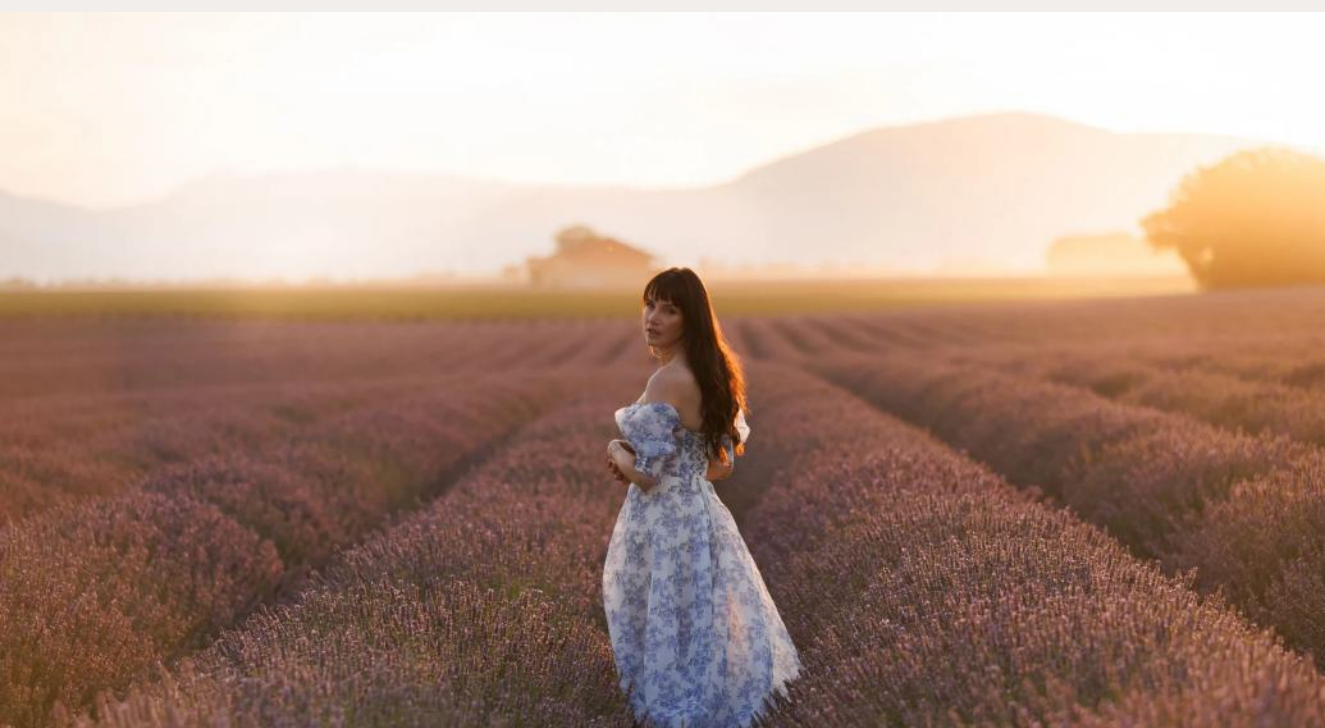
Another one of our favourite lesser-known fields, as it's another that we've barely seen others at, especially if it's at sunrise! It's about 10 minutes away from Valensole. This spot is just 1 minute away from the other sunrise field above, but offers a different view of the mountains with a little farm in the background.

**Pros:** It's another one of the quietest fields in the area, and you can't beat the direct sunrise lighting.

**Cons:** It's much smaller than the sunrise field above, so if there are other here it will be more noticeable. That's why it's not recommended for shoots during the day or at sunset.









## 7. FIELD ON CHEMIN DE RIOU "QUIET FIELD"

This field is located south of Lavandes Angelvin and Terraroma, tucked slightly off the main road, which makes it incredibly quiet. Every time we've shot here, we've barely seen another person around, if anyone at all. That's why we nicknamed it our "quiet field".

Pros: This is our top recommendation if you want complete privacy and a truly peaceful setting.

Cons: Getting here means heading a little off the beaten path. All-wheel drive isn't necessary, but you'll need to take it slow on the drive in.









## 8. FIELD ON ROUTE DE PUIMOISSON WITH A VIEW OF VALENSOLE

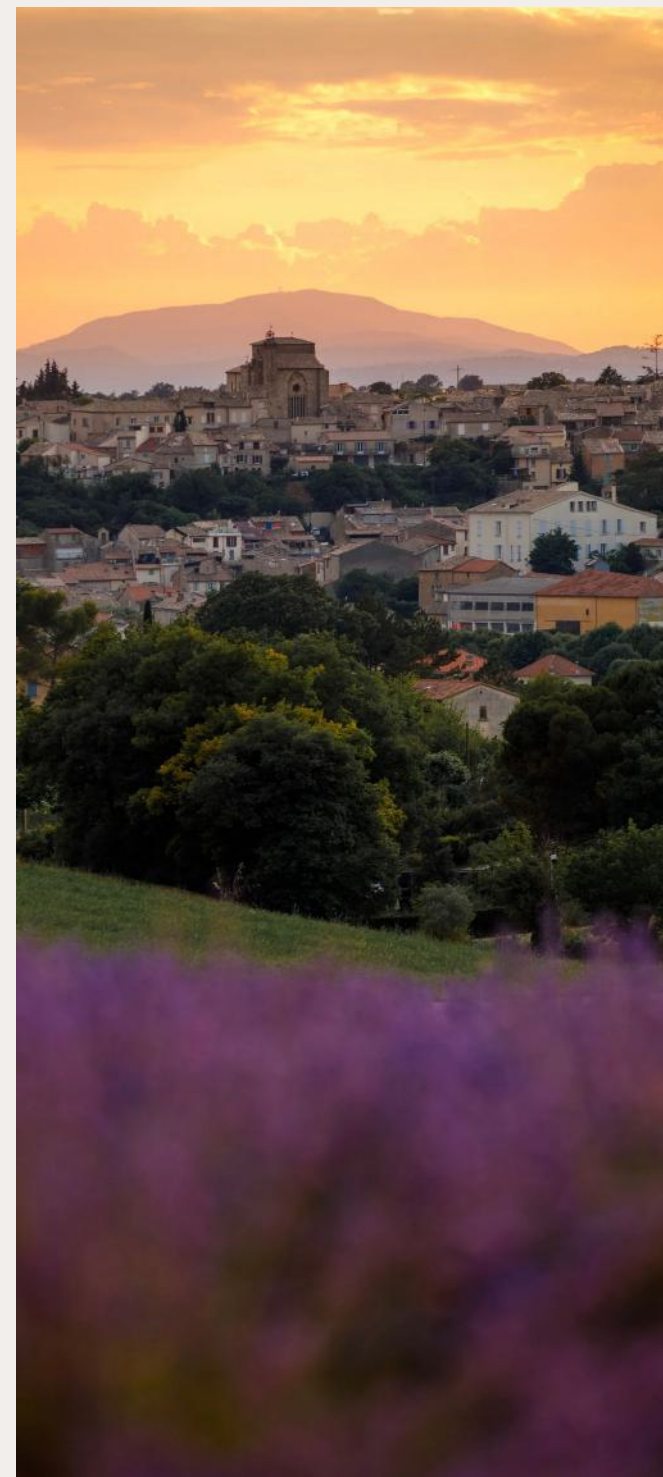
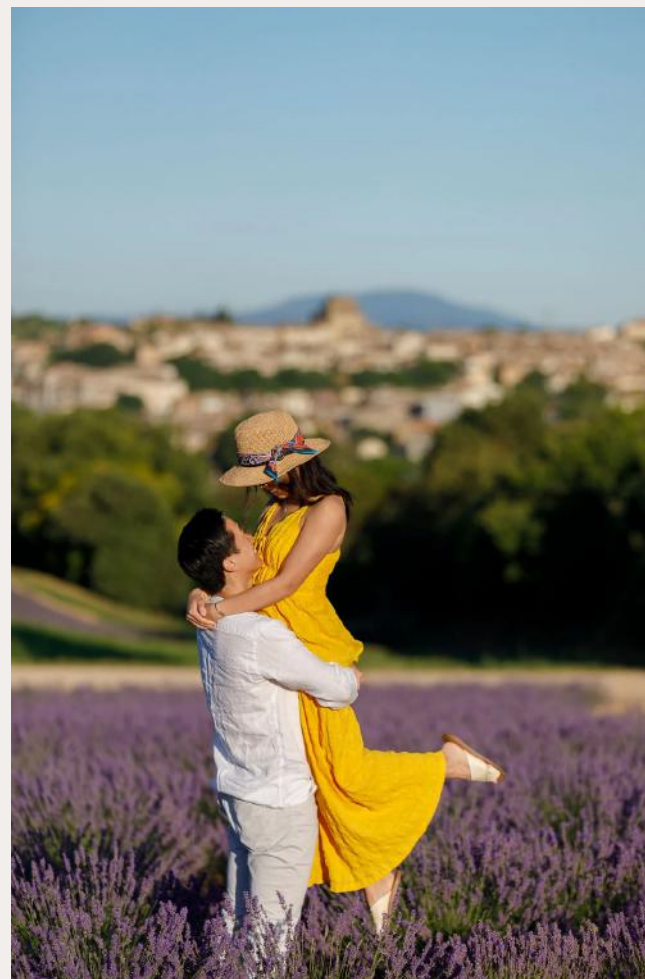
Another gorgeous field that's east of Valensole, only a four-minute drive away. We love this one since you have a stunning view of Valensole from the field that looks gorgeous in pictures! We recommend going to this field, the sage field (#14) and the dip field in one session as they're all only a few minutes away from each other.

**Pros:** The beautiful view of Valensole. There are also some olive trees to the left of the field that are fun to shoot with, pictured below.

**Cons:** It can only be visited during the day. The field is close to a family's home so we want to make sure they have privacy in the evenings.













## 9. FIELD ON ROUTE DE RIEZ IN PUIMOISSON

This is one of our favourite fields in all of the Valensole region. It's perfect for sunsets.

**Pros:** We love the little hut that's at the back of the field! It's also much less well-known than the ones closer to Valensole, so there are usually only a few others around.

**Cons:** This field is a 20-minute drive away from the main town of Valensole, so it will be a further drive if you are staying in town.









## 10. RAVIN DE LAVAL

<https://goo.gl/maps/2M4KwyC29ZAGTv7U8>

This field is perfect for those who want to go somewhere lesser-known. It's also quite unique since it's one of the only ones in the area that are curved like this.

**Pros:** This field is very quiet; we rarely share the field with anyone else here during our shoots! There's also a wheat field to the right of the lavender field that's gorgeous for photos.

**Cons:** Not recommended for sunset. The sun sets over the mountain here so we won't get much light in the early evening.





## 11. TERRAROMA

<https://goo.gl/maps/wA5o73KyGwHpTPw87>

This is another more well-known field located to the left of Lavandes Angelvin. They also have a beautiful sunflower field to the left of the lavender field. If you want to do a shoot with sunflowers as well, this is the one we'd recommend going to.

**Pros:** You can take pictures with sunflower and lavender fields!

**Cons:** Because of its proximity to Lavandes Angelvin and Valensole, it can get very busy around sunset.









12. SUNFLOWER FIELD CLOSE  
TO MANOSQUE BESIDE "LE  
GARANTS DU GÔÛT"  
SUPERMARKET

This field is perfect for those who love sunflowers!

**Pros:** The sunflowers here get humongous! The colour is stunning when they are in full bloom later in the blooming season.

**Cons:** You cannot walk inside, but you can take pictures in front of it.



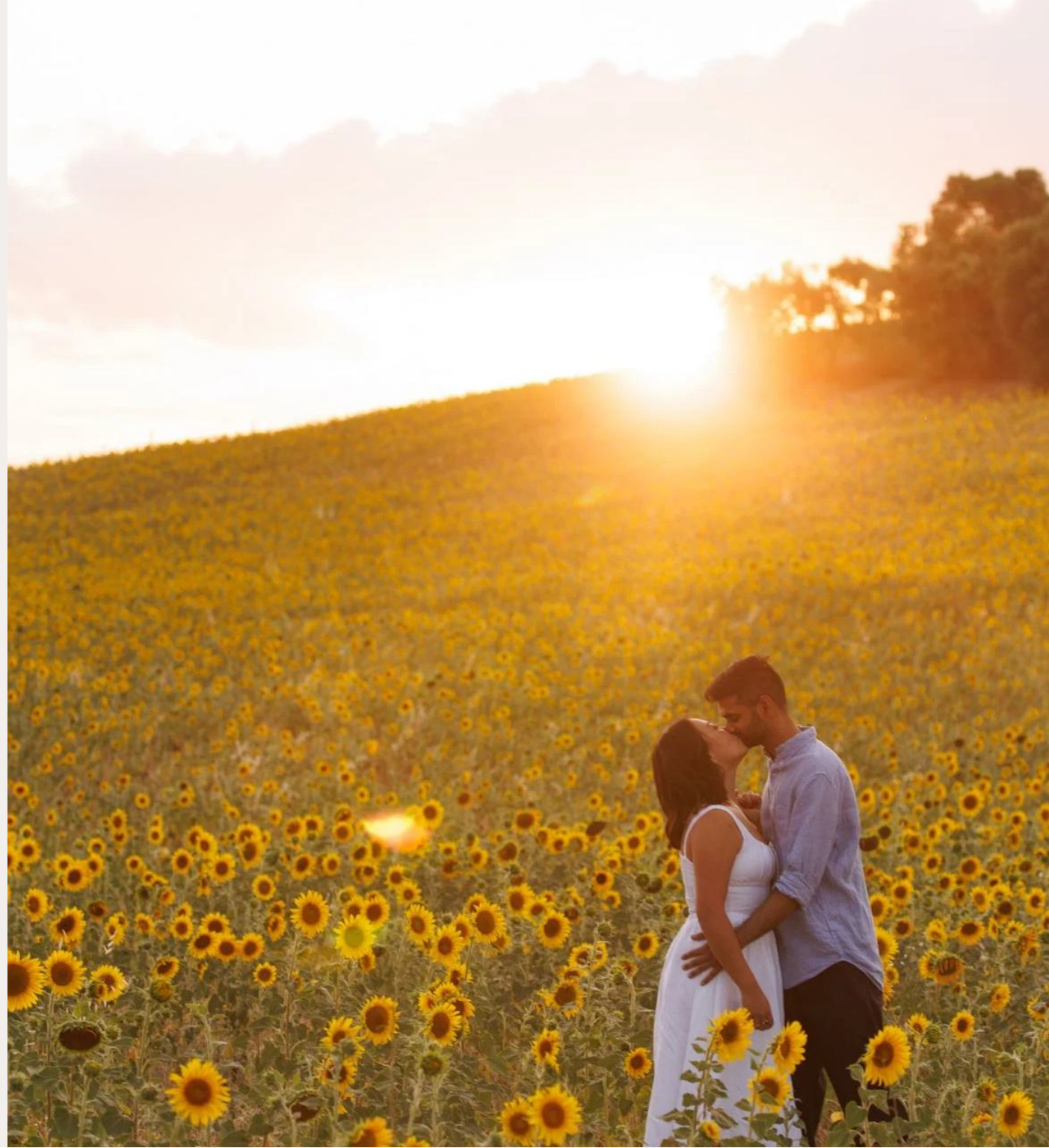




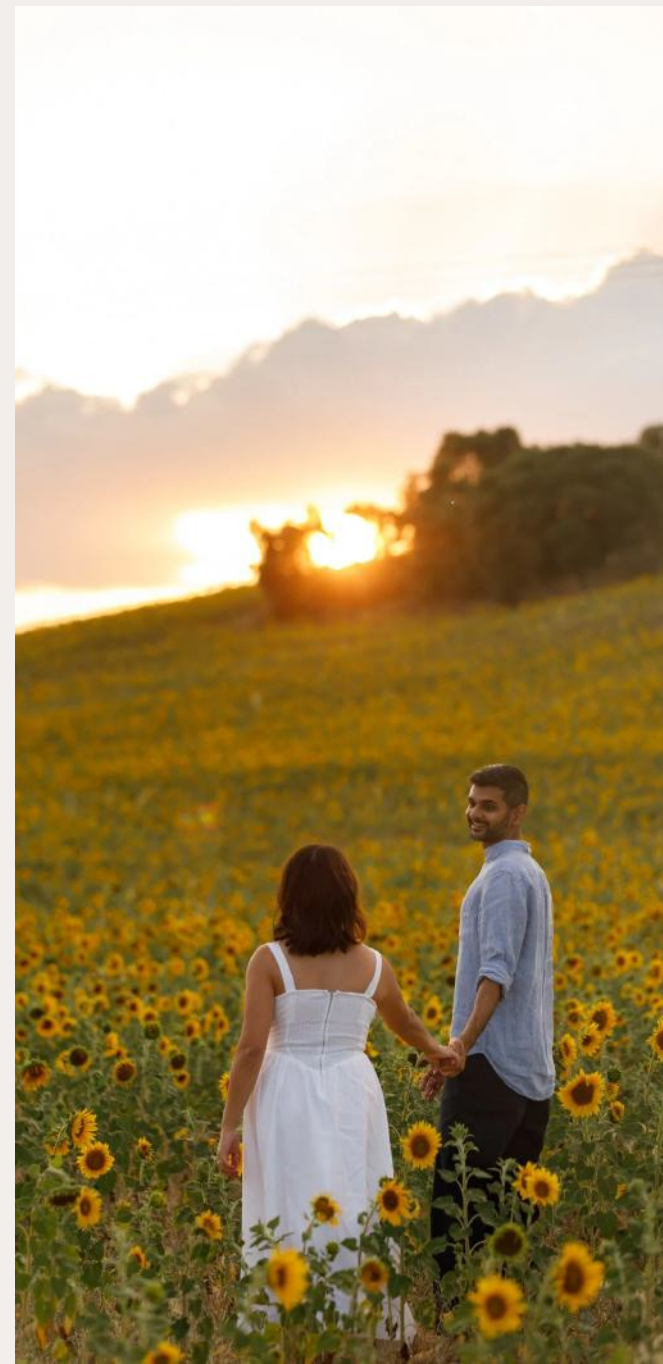
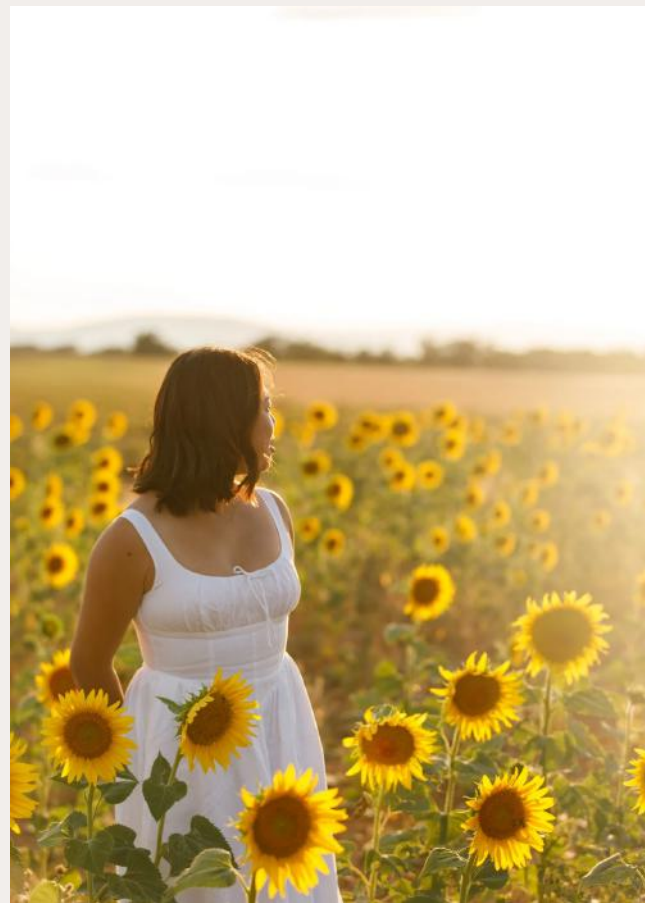


### 13. SUNFLOWER FIELDS THROUGHOUT VALENSOLE

Sunflower fields tend to pop up all over the place along the roads in Valensole as the season goes on, and you never really know where or when they'll appear. Farmers all plant at different times, so there's no exact window to catch them in bloom. That's why we usually check in June when the fields are in full bloom.









## 14. WILD SAGE FIELD ON ROUTE DE PUIMOISSON

This field is a 30-second walk from the Valensole view field (#7) pictured above.

**Pros:** It's a perfect quick stop and addition to a longer photo session to get a variety of shots with different types of fields.

**Cons:** Even though the sage is stunning, it absolutely stinks! It kind of smells a little bit like armpit 🤢









## 15. TOWN OF VALENSOLE

Here you'll find charming streets and vibrant colours. Valensole is a beautiful town in an idyllic countryside setting.

**Pros:** Another great stop and addition to a longer photo session to get a variety of shots.

**Cons:** It'll be busy here during the day, so we recommend coming here early or right after sunrise.









## 16. PICNIC & PHOTO SESSION

This isn't a location but an addition to a shoot. A picnic can be done in any field that you choose! This picnic includes an assortment of fresh snacks and refreshments that are locally sourced. We will provide a photo session after your picnic to capture you in whichever beautiful setting you choose.

For the picnic, we'll provide you with:

- + fresh bread and pastries from a local boulangerie (bakery)
- + a small assortment of cheese from a local fromagerie (cheese shop)
- + a small bowl of fruit
- + water, juice and wine









## Tips for Valensole:

Please keep in mind that the farmers may plant in different fields each year, so not all the fields will be the same every year. We will be in touch at the beginning of the lavender season with updates.

The lavender season is from mid-June to mid-July. Harvesting usually begins mid-July, so aim to visit before then!

For the best light, book your shoot for sunrise or sunset. However, for fewer crowds, we recommend early morning, late afternoon or sunrise.

Wear comfortable shoes, as fields can be uneven. For those who want to wear heels, feel free to bring heels to change into for our photo session!

